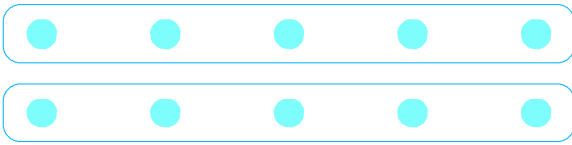
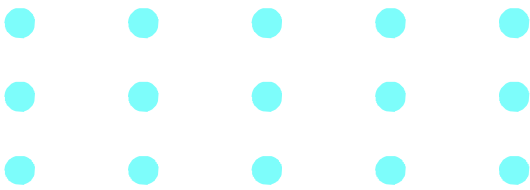


●를 5개씩 묶어 보세요.



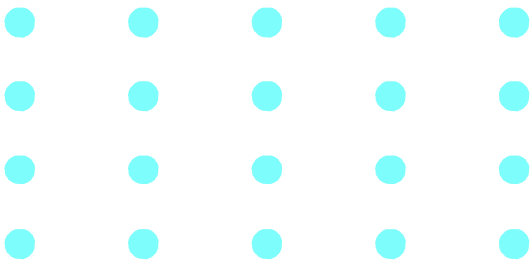
5개씩 묶어서 몇 개인지 세어 보세요.

$$5 + 5 = 10$$



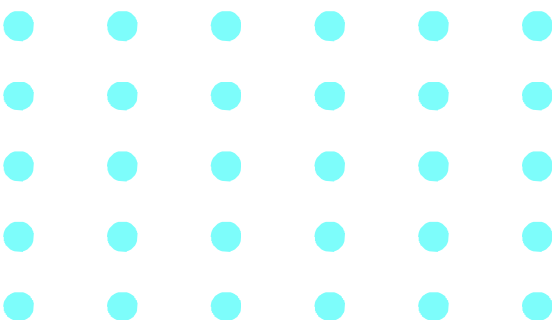
$$5 + 5 + 5 = \underline{\quad}$$

Diagram showing the addition process: 5 + 5 = 10, then 10 + 5 = 15.



$$5 + 5 + 5 + 5 = \underline{\quad}$$

Diagram showing the addition process: 5 + 5 = 10, 10 + 5 = 15, 15 + 5 = 20.



$$5 + 5 + 5 + 5 + 5 + 5 = \underline{\quad}$$

Diagram showing the addition process: 5 + 5 = 10, 10 + 5 = 15, 15 + 5 = 20, 20 + 5 = 25, 25 + 5 = 30.

