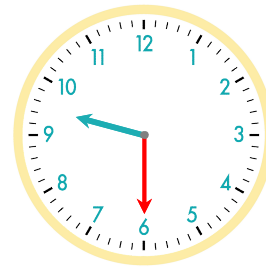
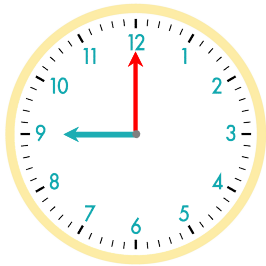


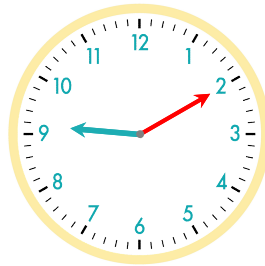
30분 후
긴바늘이 눈금 30개를 이동



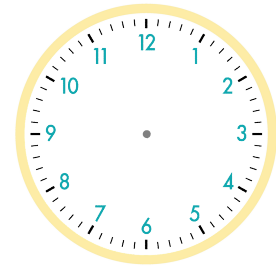
☺ 주어진 시각은 몇 시 몇 분인지 쓰세요. 그리고 몇 분 후의 시각을 쓰고, 시계에 나타내 보세요.



10분 후

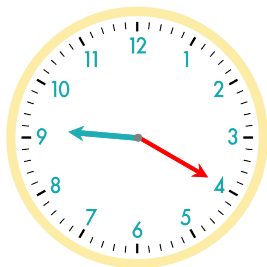


10분 후

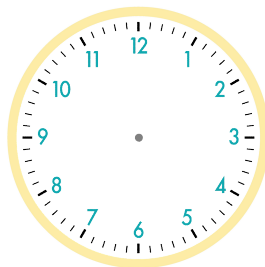


9시

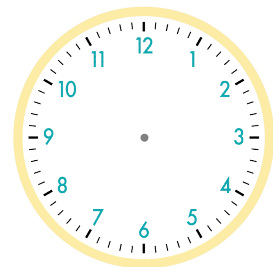
9시 10분



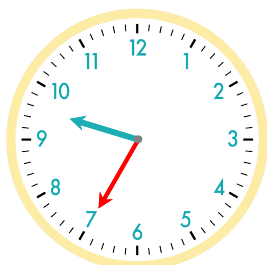
5분 후



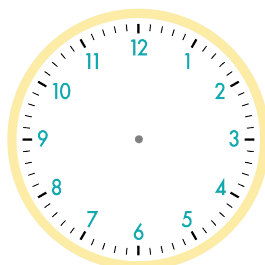
10분 후



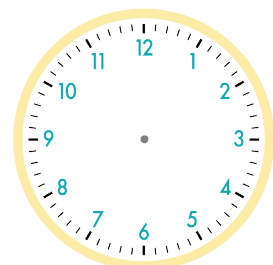
9시 20분



20분 후



15분 후



9시 35분

정답

