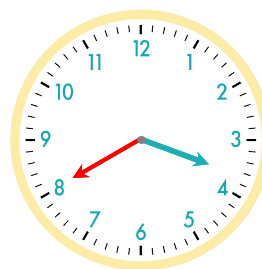
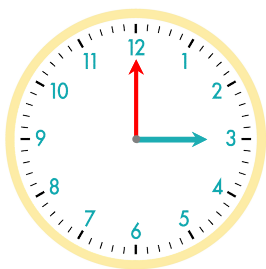


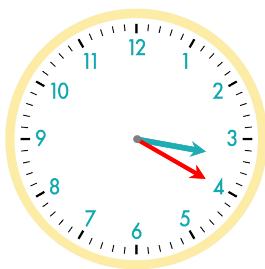
40분 후
긴바늘이 눈금 40개를 이동



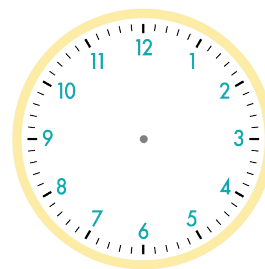
☺ 주어진 시각은 몇 시 몇 분인지 쓰세요. 그리고 몇 분 후의 시각을 쓰고, 시계에 나타내 보세요.



20분 후

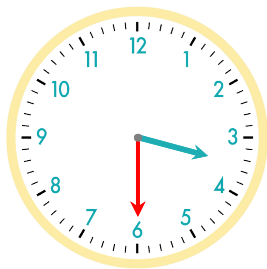


10분 후

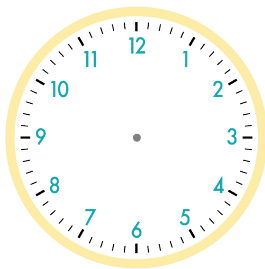


3시

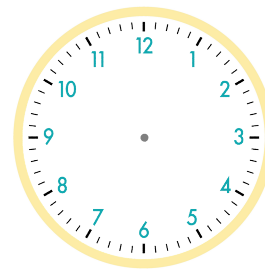
3시 20분



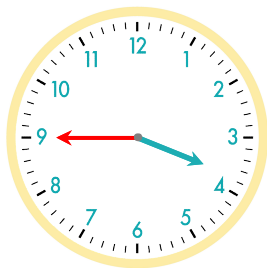
5분 후



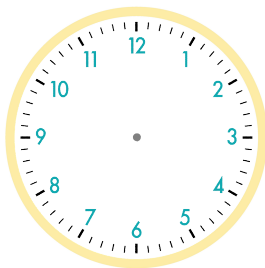
10분 후



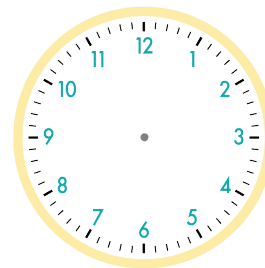
3시 30분



5분 후



20분 후



3시 45분

정답

