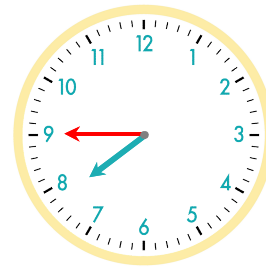
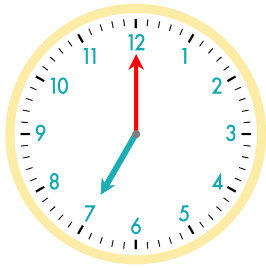


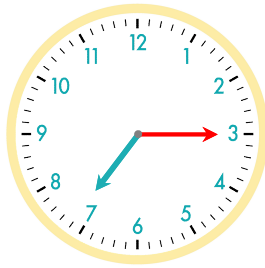
45분 후  
긴바늘이 눈금 45개를 이동



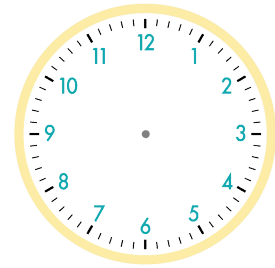
☺ 주어진 시각은 몇 시 몇 분인지 쓰세요. 그리고 몇 분 후의 시각을 쓰고, 시계에 나타내 보세요.



15분 후

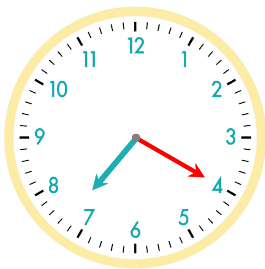


5분 후

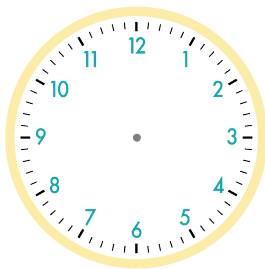


7시

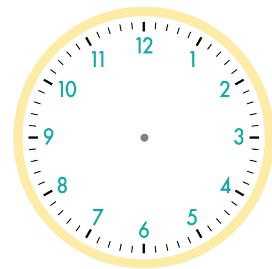
7시 15분



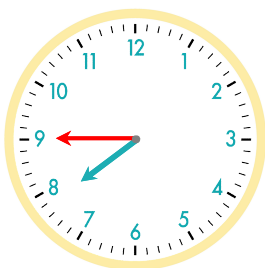
5분 후



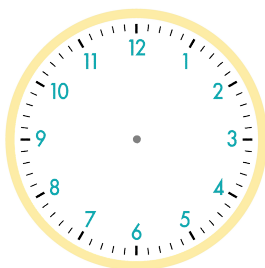
20분 후



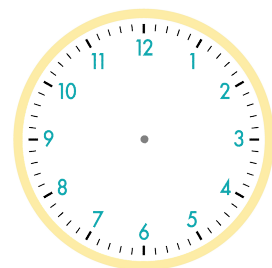
7시 20분



5분 후



10분 후



7시 45분

정답

